

Saflo[®] SUBCUTANEOUS CATHETER WITH PASSIVE SAFETY SYSTEM

Our solution for safe, comfortable and easy subcutaneous infusion



SAFLO[™]



SAFLO[™] 90



SAFLO[™] 90 Port

 **DELTA MED**
MEDICAL DEVICES
Solutions for Health

PART OF



NUMANTEC[®]
HUMAN INNOVATION TECHNOLOGY

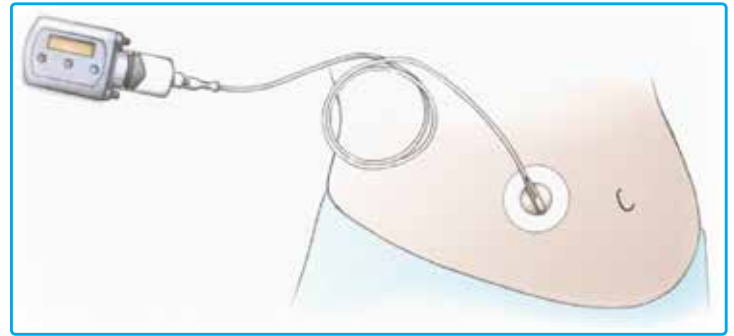
SAFLO™ RANGE

The Saflo™ infusion sets are designed for subcutaneous drug delivery. This range is suitable for subcutaneous drug infusion in the treatment of diseases such as:

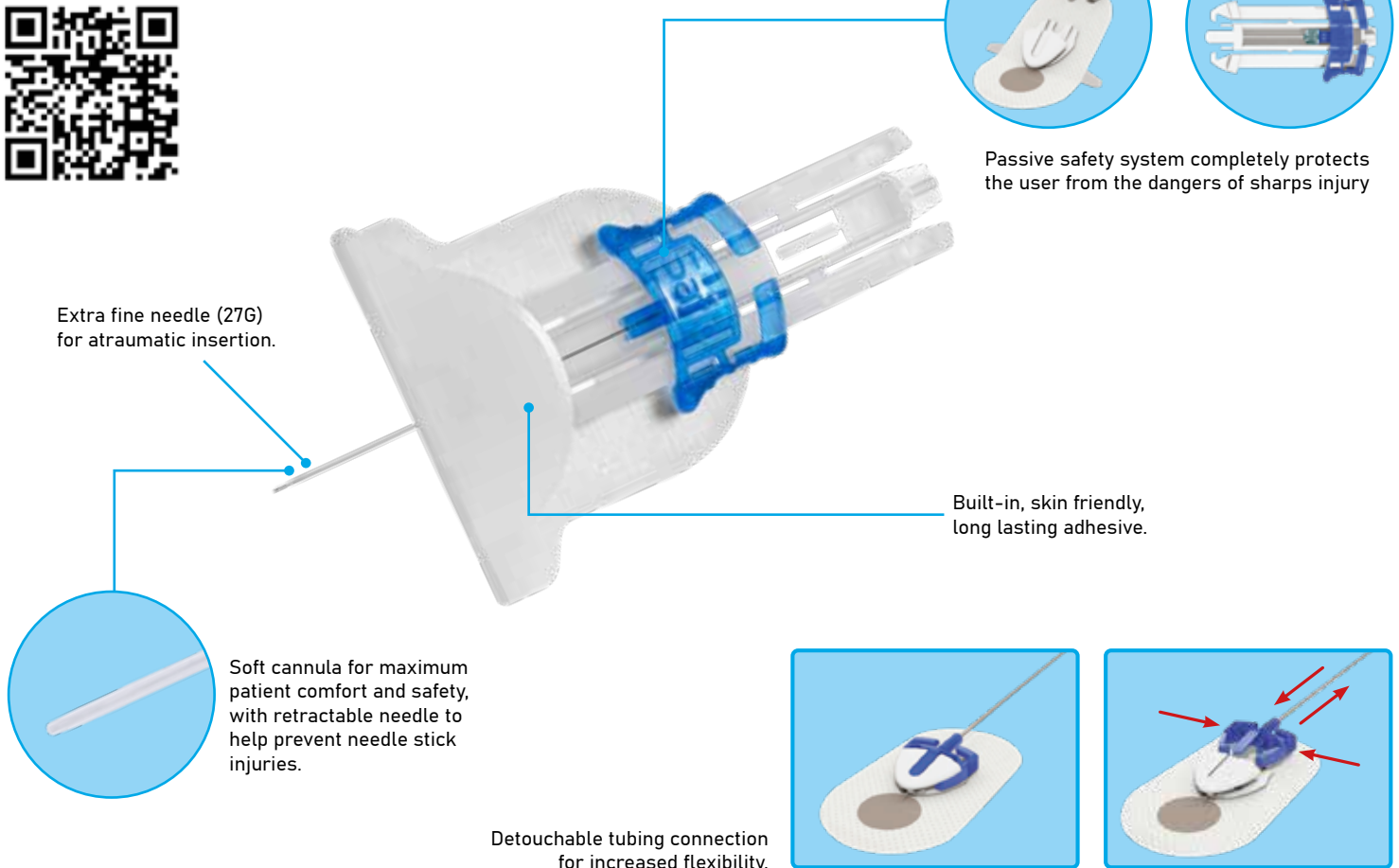
- Palliative Care/Pain management
- Parkinson's Disease
- Thalassemia
- Immunology
- Rehydration
- Asthma
- Addison's disease
- Antibiotics

The Saflo™ range consists of a number of different features offering maximum comfort and safety for the user, including:

- **Soft Cannula** minimizing frequency of nodules, redness and swelling compared to traditional butterfly lines.
- **Passive Safety System** guaranteeing High protection against needle stick injuries and ease of use.
- **Thin needle design** helping minimize pain during insertion.
- **Low priming volume** minimizing drug wastage.
- **Skin-friendly self-adhesive pad** making extra adhesive unnecessary.
- **Standard Luer Lock Connections** and wide range of accessories for extensive compatibility with infusion devices.
- **Disconnection of tubing** on most products supporting patient freedom.
- **Latex free device** and **PVC free fluid path** ensuring widest compatibility with common drugs.

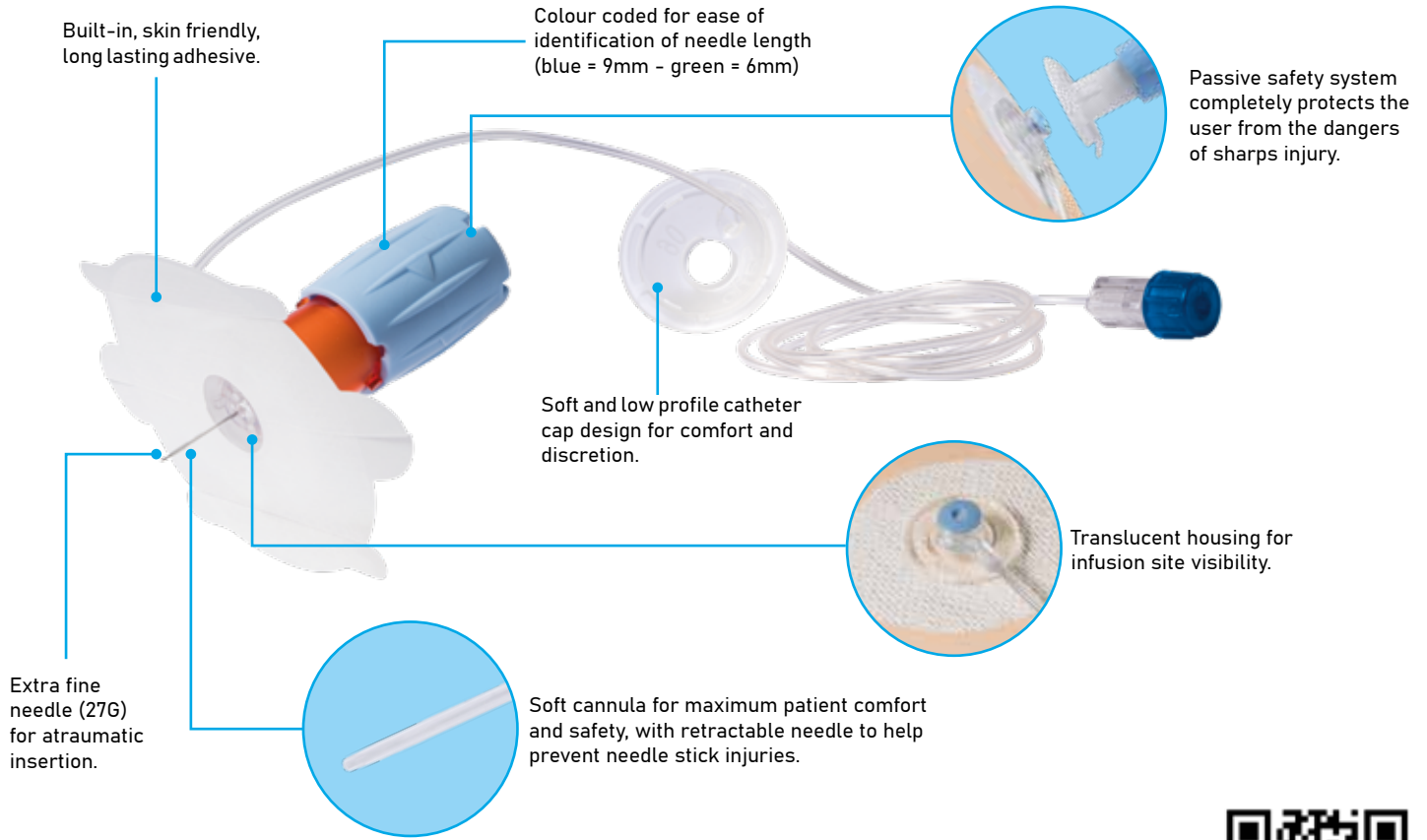


SAFLO™



SAFLO™ 90

The Saflo™ 90 provides a 90 degree catheter configuration for **full control of depth of insertion**. It has an effective **passive needle safety system** in compliance with the **sharps safety regulations**.



SAFLO™ 90 PORT

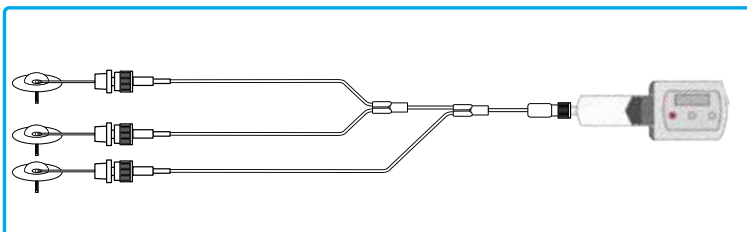
With the same basic characteristics as the Saflo™ 90 the ported configuration adds extra flexibility.

It may be used as a means of administering intermittent therapies or, in conjunction with standard administration sets, for higher flow applications such as subcutaneous rehydration therapy.

It also allows multi site therapies such as immunoglobulins for the treatment of primary immunodeficiency.

Chose between 2 and 3 subcutaneous insertions. The infusion set as a low priming volume, resulting in minimal drug wastage.

Short extension and needle free connector allowing tubing disconnection for increased flexibility and patient freedom.





REF. CODE	DESCRIPTION	CANNULA MATERIAL	CANNULA GAUGE	NEEDLE GAUGE	LENGTH	INSERTION ANGLE	UNITS PER SHELF BOX/ SHIPPING CASE
C001-00	Subcutaneous Catheter	FEP	24G	27G	19mm	20° - 45°	10/240

REF. CODE	DESCRIPTION	MATERIAL	LENGTH	CONFIGURATION	PRIMING VOLUME	DRAWING	UNITS PER SHELF BOX/ SHIPPING CASE
T-100-00	Straight connector tubing 100cm	PVC - PE	100cm	straight	< 0.20ml		10/240
T-100-SP	connector tubing w/ side port 100cm	PVC - PE	100cm	2-way	< 0.20ml		10/240
P-001-00	Injection port adaptor	PVC - PE	5cm	Straight w/ needle free connector	< 0.10ml		10/240



REF. CODE	DESCRIPTION	CANNULA MATERIAL	CANNULA GAUGE	NEEDLE GAUGE	LENGTH	INSERTION ANGLE	UNITS PER SHELF BOX/ SHIPPING CASE
SF90-106	Saflo™ 90 catheter - 6mm w/ integrated extension line*	FEP	24G	27G	6mm	90°	12/216
SF90-109	Saflo™ 90 catheter - 9mm w/ integrated extension line*	FEP	24G	27G	9mm	90°	12/216

DESCRIPTION	MATERIAL	LENGTH	CONFIGURATION	PRIMING VOLUME	UNITS PER SHELF BOX/SHIPPING CASE
*Integrated extension line	PVC - PE	100cm	straight	< 0.20ml	12/216



REF. CODE	DESCRIPTION	CANNULA MATERIAL	CANNULA GAUGE	NEEDLE GAUGE	LENGTH	INSERTION ANGLE	UNITS PER SHELF BOX/ SHIPPING CASE
SF90-P06	Saflo™ 90 catheter - w/ injection port (blue 6mm)*	FEP	24G	27G	6mm	90°	12/216
SF90-P09	Saflo™ 90 catheter - w/ injection port (blue 9mm)*	FEP	24G	27G	9mm	90°	12/216

REF. CODE	DESCRIPTION	MATERIAL	LENGTH	CONFIGURATION	PRIMING VOLUME	DRAWING	UNITS PER SHELF BOX/ SHIPPING CASE
	*Integrated extension line	PVC - PE	3cm	Straight w/ Needle free connector	< 0.10ml		12/216
X150-00	Standard 150 cm microbore extension set	PVC - PE	150cm	Straight	< 0.20ml		10/240
SFX-102Y	90cm extension set Y-configuration	PVC - PE	90cm	2-way	< 0.20ml		10/240
SFX-103Y	90cm extension set 3 way configuration	PVC-PE	90cm	3-way	<0.20ml		10/240

MKSAA000102 - 05/05/2026 - REV.4.0

Delta Med
is a Numantec
company



CERTIFICATES:
ISO 13485 - ISO 9001 - MDSAP 13485
The EC Certificates for Medical Devices manufactured by
Delta Med are issued by TÜV SÜD Product Service GmbH.

Delta Med SpA
via Guido Rossa, 20 46019 Viadana (MN), Italy
Telefono: +39 0375 785915 - Fax: +39 0375 785201
info.deltamed@numantec.eu - www.deltamed.it
info@numantec.eu - www.numantec.eu